

# HP Service Test Management module for HP Quality Center

Data sheet

## The HP Service Test Management module enables QA teams to manage components of an application under test while keeping in step with development.

### Manage the quality of composite applications

Organizations continue to improve their responsiveness to market demands by investing in IT costs to modernize their applications. In a recent study of more than 200 companies worldwide, Forrester Consulting found that “69% of respondents have earmarked more than 25% of their IT budgets for modernization, while one-third of survey respondents will dedicate 51% of their IT budgets for modernization.”<sup>1</sup> This is a massive investment in the overhaul of inflexible legacy applications, and it will advance the adoption of Web 2.0 technologies, service-oriented architectures (SOA), agile and iterative development methodologies, and other strategies for increasing agility. It is imperative that QA teams update their practices to take on the challenges of testing these modern applications. Just as the development team is expected to leverage new technologies, shorten development cycles, and respond more quickly to business demands, QA must also become agile and deliver valuable services in this new era of application development.

Aging monolithic applications are being hidden behind a modern abstraction layer, or rewritten altogether with a component- or service-based architecture. A single modern application can have multiple components and layers, each with unique requirements, availability, and ownership. And with today’s tools, you no longer have to wait for a stable graphical user interface (GUI) to begin testing an application. Leveraging the power of

HP Quality Center, the HP Service Test Management module can help you manage the quality of these application components and services, and provide a stable foundation for your organization’s modern applications.

### Manage the testing of application components

HP Service Test Management extends HP Quality Center by providing management and information for composite applications. Access to this information allows QA to test earlier in the development lifecycle and execute only the tests needed, shortening test cycles and responding more quickly to change. With HP Service Test Management, your QA teams can:

- Participate effectively and add unique value to each iteration within an agile lifecycle
- Test earlier with a clear understanding of what components can and should be tested at different stages of the development lifecycle
- Manage and execute non-GUI testing (also known as “headless” testing), which is often the only option early in development before the GUI is stable
- Assess the impact of a change to an application component quickly, and test only what is affected, avoiding costly over-testing
- Determine test coverage and test status quickly at component and application levels

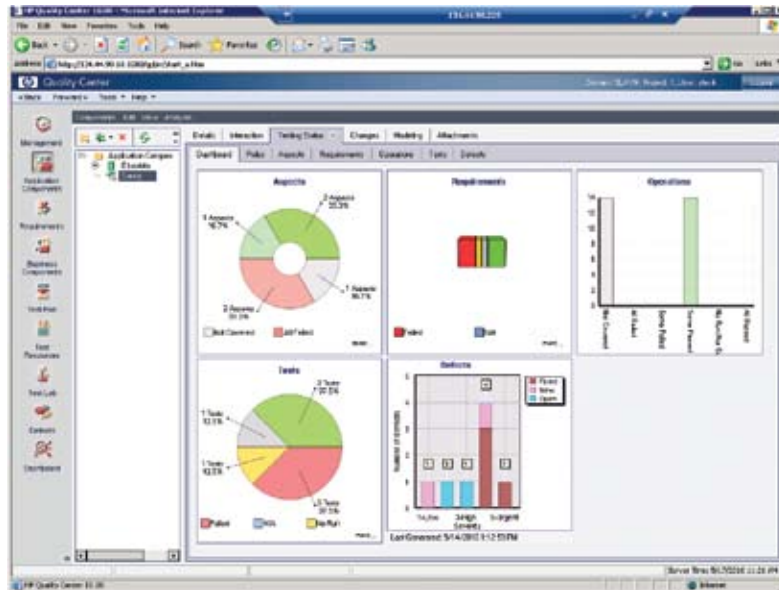
---

<sup>1</sup>“Clearing Your Path to Modern Applications and Business Agility,” an April 2010 commissioned study conducted by Forrester Consulting on behalf of HP. The study can be downloaded at [www.hp.com/go/agile](http://www.hp.com/go/agile)

---



**Figure 1:** The HP Service Test Management dashboard provides quick, at-a-glance test coverage and testing progress for your application components.



### Change impact analysis

HP Service Test Management allows your QA team to represent dependencies between components within a composite application and in architectures where components are shared by multiple applications. Armed with this information, QA can quickly assess the impact on other components and on consuming applications when a change occurs elsewhere in the system. When QA teams know exactly which components are impacted by a change, they can immediately begin testing affected areas, and can confidently avoid over-testing by excluding unaffected areas of the system—saving time and resources.

### Stay in sync with developers

In the fast pace that is characteristic of agile development, QA teams are easily excluded. Short of embedding a test engineer in the cubicle of every developer, how can QA stay on top of the constant change? HP Service Test Management creates a platform for tracking modifications made to components by developers. This allows QA professionals to assess the impact to the overall system and quickly address affected areas within a sprint or iteration window.

### Best-in-class services management

HP Service Test Management plugs into HP Quality Center for service-oriented quality management. Services can be automatically discovered and downloaded from any Universal Description, Discovery and Integration (UDDI)-compliant SOA system of record, such as HP SOA Systinet, through the UDDI interface or other mechanisms used to

share services, such as URLs or files. Once the service is defined in HP Quality Center, HP Service Test Management enables you to manage it alongside other application components. HP Quality Center can then report testing results and defects back into the application lifecycle through integration with HP SOA Systinet and drive critical lifecycle decisions—such as the decision to deploy a service into production—based on testing results.

## How HP Service Test Management works

### Define a component

An application component is defined through a simple user interface (UI). If the application component type is not listed, HP Service Test Management is extensible and allows you to represent any new technology. In the case of services, you can import service information via Web Services Description Language (WSDL) through any UDDI repository, such as HP SOA Systinet.

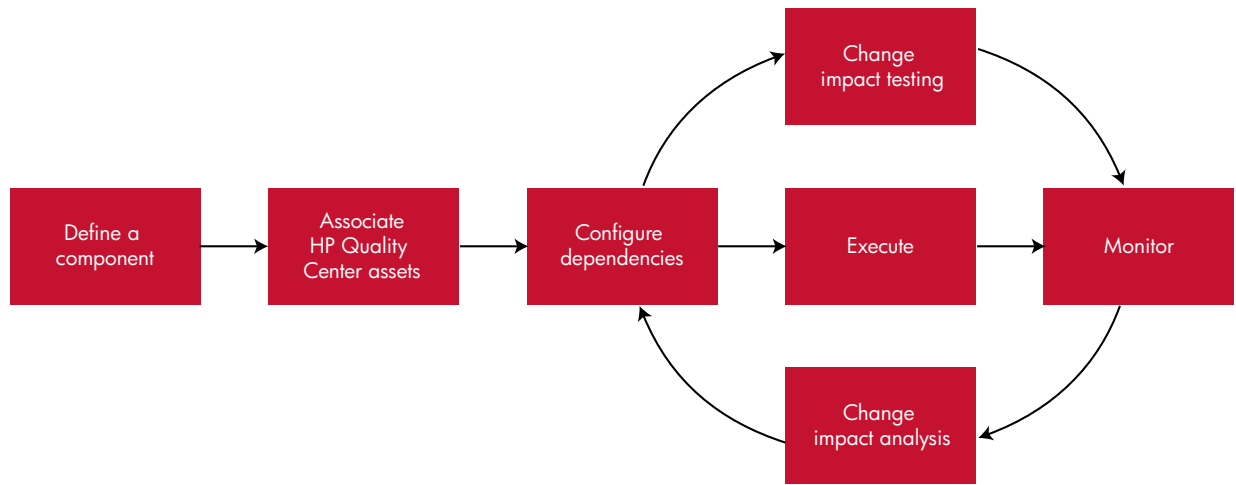
### Create and associate HP Quality Center assets

Once a component is defined, you can associate the component with the relevant tests and requirements. HP Service Test Management facilitates the generation of requirements and tests through a wizard.

### Represent dependencies

HP Service Test Management allows you to manage the dependencies between any application components. This information can be used to determine what testing needs to happen in the event of a change.

**Figure 2:** How HP Service Test Management works



### **Execute tests**

Once the previous steps are completed, you have a library of test sets connected to your application components, and those tests can be executed as needed. Any defects discovered by the tests can then be linked to application components.

### **Monitor application quality**

QA and development managers can review a summary of changes made to the application under test and of how application quality was affected. If a problem is detected, the development team can be notified and can respond.

### **Change impact testing and analysis**

The QA team can review the application dependencies and determine which tests need to be run when a change occurs in development. Testers can then validate changes within a short test cycle by running only the tests that apply, and excluding the tests that don't. After the cycle is concluded, the QA team can continue its ongoing monitoring of the system under test.

## **Key features and benefits**

- Automated detection of changes to application components
- Change-impact testing and the automatic creation of tests to validate change
- Easy test and requirements generation through a wizard

- Visual representations of the components of a composite application, and of the dependencies between those components
- Ability to apply quality rules and policies and alert the user if they are violated

### **HP Quality Center**

HP Service Test Management is part of HP Quality Center, an integrated set of capabilities and best practices for automating key quality activities, including requirements management, test management, defect management, functional testing, and business process testing. Using HP Service Test Management, you can associate all of these HP Quality Center assets with application components.

### **HP Unified Functional Testing**

HP Unified Functional Testing brings HP QuickTest Professional, HP QuickTest Professional add-ins, and HP Service Test together in a single package. This powerful combination of functional testing tools allows you to conduct automated testing for both GUI-based applications and non GUI-based services. HP Service Test is designed to work with HP Unified Functional Testing, and it enables you to design and execute tests for components managed by HP Service Test Management.

## A complete solution

### Comprehensive training

HP provides a comprehensive curriculum of HP software and IT Service Management courses. These offerings provide the training you need to realize the full potential of your HP solutions, increase your network optimization and responsiveness, and achieve better return on your IT investments.

With more than 30 years of experience in meeting complex education challenges worldwide, HP knows training. This experience, coupled with unique insights into HP Software & Solutions products, positions HP to deliver an outstanding training experience. For more information about these and other educational courses, visit [www.hp.com/learn](http://www.hp.com/learn)

### HP Financial Services

HP Financial Services provides innovative financing and financial asset management programs to help you cost-effectively acquire, manage, and ultimately retire your HP solutions. For more information on these services, contact your HP sales representative or visit [www.hp.com/go/hpfinancialservices](http://www.hp.com/go/hpfinancialservices)

## Contact information

To find an HP Software & Solutions sales office or reseller near you, visit

[www.managementsoftware.hp.com/buy](http://www.managementsoftware.hp.com/buy)

## HP Services

### Get the most from your software investment

HP provides high-quality software services that address all aspects of your software application lifecycle needs. With HP, you have access to standards-based, modular, multi-platform software coupled with global services and support. The wide range of HP service offerings—from online self-solve support to proactive mission-critical services—enables you to choose the services that best match your business needs.

For an overview of HP software services, visit [www.managementsoftware.hp.com/service](http://www.managementsoftware.hp.com/service)

To access technical interactive support, visit Software Support Online at [www.hp.com/managementsoftware/services](http://www.hp.com/managementsoftware/services)

To learn more about HP Software Customer Connection, a one-stop information and learning portal for software products and services, visit [www.hp.com/go/swcustomerconnection](http://www.hp.com/go/swcustomerconnection)

To learn how HP Service Test Management can help you modernize your applications to take advantage of Web 2.0 technologies, service-oriented architectures (SOA), and agile development, please visit [www.hp.com/go/stm](http://www.hp.com/go/stm)

Share with colleagues



### Get connected

[www.hp.com/go/getconnected](http://www.hp.com/go/getconnected)

Current HP driver, support, and security alerts delivered directly to your desktop

