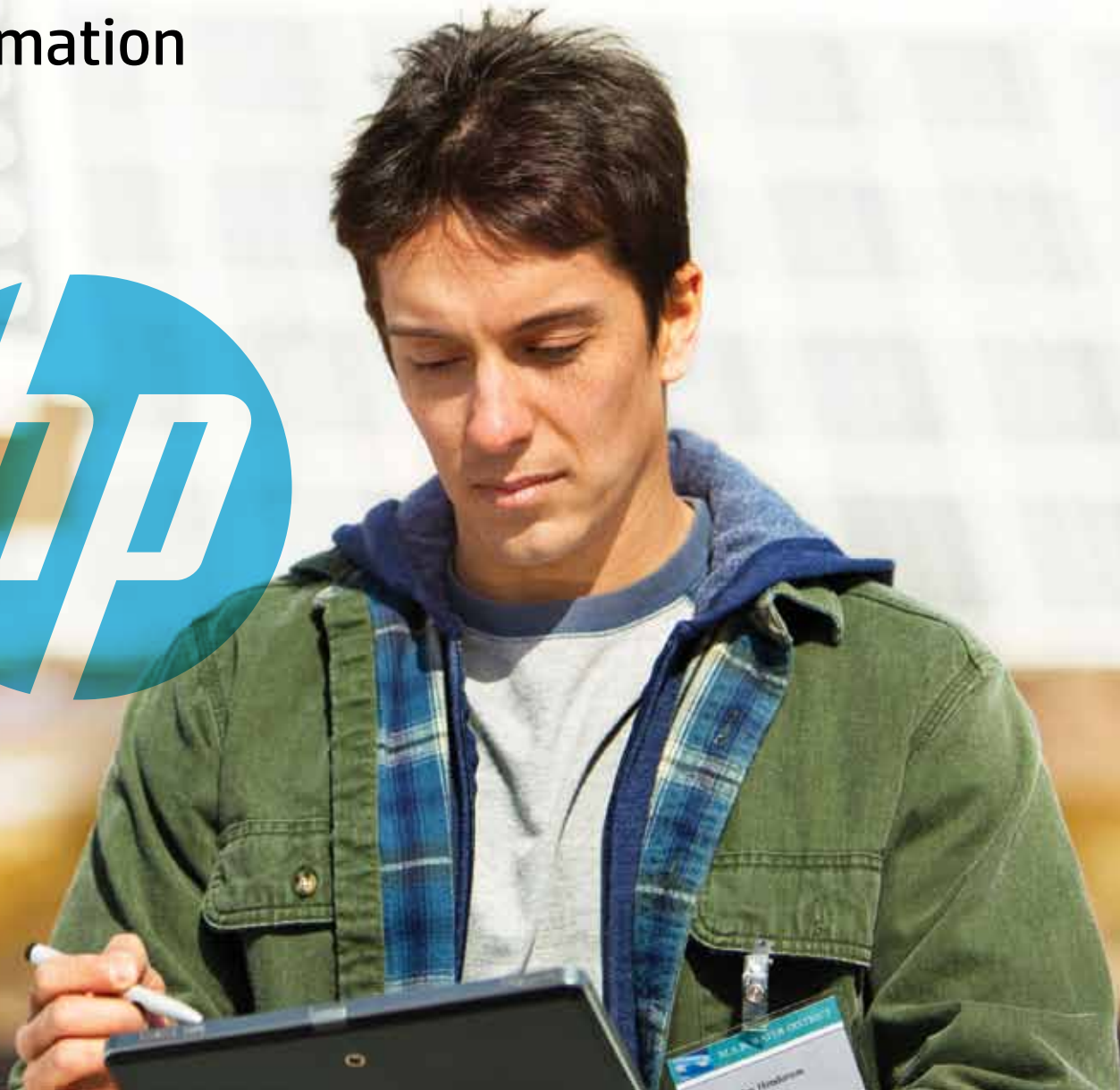


Brochure

Attain application agility in a world without borders

HP IT Performance Suite for Application Transformation



The HP IT Performance Suite (ITPS) for Application Transformation is integrated software and services that help application teams shift the balance of investment from maintenance to innovation while delivering with relentless efficiency and consummate quality.

Are your applications keeping up or keeping you up at night?

Today's mobile world is dynamic and relentlessly impatient. The marketplace is interconnected, mobile, unpredictable, and fluid. And enterprises (corporate and government) everywhere are under escalating pressure to re-architect and modernize applications to fit these fluid characteristics—to support the proliferation of mobile devices, to advance business processes in real time, and to harness the scale and elasticity of the cloud to support the digital capability for seven billion increasingly demanding customers around the world.

Applications organizations must transform how they plan and assess, develop, deploy, and optimize investment in their applications portfolio or risk being tied down to a model slow to respond, ultimately no longer supporting business. Today, research shows that most organizations spend 70% of their IT applications budget just keeping the lights on, and only 30% driving innovation.¹

Shift the balance: free resources to deliver faster and transform your enterprise

The time is now to unlock those trapped resources for innovation. And there are tools and solutions to help. HP ITPS Software and Services for Application Transformation help enterprises absorb the pace of change, respond to the dynamic marketplace and its users, and deliver application innovation, while reducing delay and costs resulting from dependencies on rigid, costly legacy systems, in essence, shifting the balance from as-is to to-be.

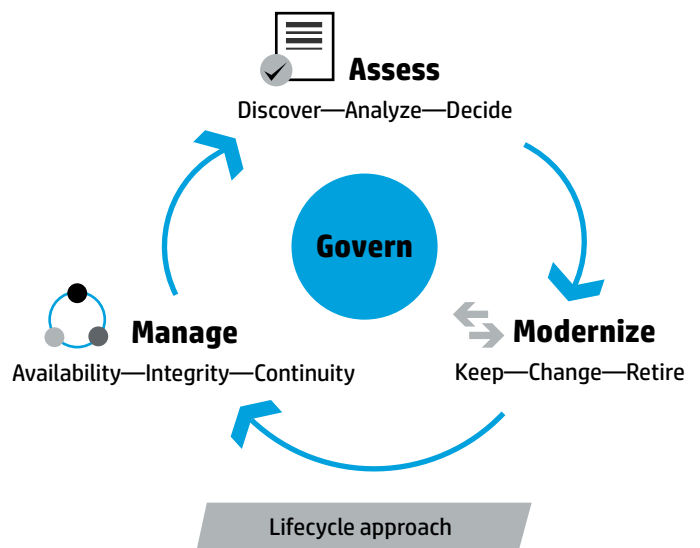
The HP point-of-view for application transformation bridges people, process, and technology, and at its foundation is the experience from working with 1000's of enterprises through multiple iterations of IT and application evolution. HP helps business and IT organizations across the globe simplify their seemingly complex journey to modernize: adopting and supporting mobile, agile, and cloud in their application architecture, development, and delivery model.

HP ITPS Software and Services for Application Transformation provide a unified, real-time view of strategic goals, supported by enterprise (business and mission) requirements. The HP tools then map these goals to the existing and planned application landscape, help to assess and prioritize investment opportunities, and provide

intelligent perspective needed for tradeoffs. This approach supports incremental, manageable steps today against a larger portfolio plan, as work progresses to assess, modernize, and manage the full application portfolio.

The HP proven Application Transformation approach includes complete Application Lifecycle Management (ALM) designed to help eliminate silos and reduce cycle time in application modernization efforts. HP ALM software and solutions keep teams focused on their planning, design, development, and testing initiatives so they can quickly adapt to change and benefit from agile practices and new mobile and cloud technologies.

Figure 1. HP Application Transformation approach



With HP ITPS Software and Services for Application Transformation—including HP Project and Portfolio Management (HP PPM), HP ALM, HP Quality Management, and testing solutions—the portfolio management office (PMO), application development, quality assurance, and delivery teams are equipped to shift the balance from legacy to innovation, delivering high-quality applications faster than ever before.

¹ Source: The Hackett Group, April 2010

HP ITPS Software and Services for Application Transformation—Assess

HP Project and Portfolio Management

Streamline demand and plan where it matters—for greater impact and velocity

HP PPM software and cloud-based services deliver the tools and insights needed for an agile PMO. HP PPM integrates and unifies the activities that manage project execution within and across the organization—demand management, financial, time and resource, project and program, and portfolio management. It provides real-time visibility into all your investments, at all times, and from multiple perspectives. And, HP PPM integrates with HP ALM so that demand-driven plans rapidly translate into application projects and ultimately business results.

HP PPM is a modern environment supporting distributed team interaction with social context and mobile device access. HP PPM works with HP Enterprise Collaboration, the social interaction framework of HP, to enable PPM work streams to collaborate with context-based conversation, access to history, subject-matter expertise, and intelligent discussions. And, HP PPM supports mobile device interaction with a collection of persona-based mini-applications that enable immediate tracking, access, and interaction.

Figure 2. Access and drive demand, portfolio and program decisions directly from tablet or smartphone



A financial services company used HP PPM Center to increase visibility and oversight to systematically prevent non-strategic projects that were nothing but net cost to the company. Over a three-year period after HP PPM Center deployment, the company consecutively recovered \$3.1 million USD, \$8.1 million USD and \$10.6 million USD. The company is also saving \$1 million USD annually through optimization of internal and external resources used in project work.

HP Application Portfolio Management

Keep the focus where it counts—real-time access to your complete portfolio for rapid transformation decisions

HP Application Portfolio Management (APM), available as software or a cloud-based service, enables application portfolio managers and the PMO to assess and prioritize their application portfolio for rationalization and modernization opportunities—based on both business goals and IT technology decisions—and then provide ongoing governance through business events such as mergers and acquisitions, divestiture, and IT sourcing strategy changes.

Figure 3. Visualize, assess, and prioritize your application portfolio with HP APM



HP Systinet

Establish architecture and development best practice and reduce technical debt

For the enterprise architect and project manager, HP Systinet software provides teams with core capabilities for establishing and managing consistency across design and development enabling conformance to architectural and technical policies. HP Systinet's extensible repository and UI simplifies publishing and describing application components and shared services, their interfaces, dependencies, and associated service levels.

It provides automation to apply and enforce consistent adoption of policies to facilitate component-based and service-oriented applications interoperability and change readiness to meet business objectives. In short, while HP PPM and HP APM help you deliver the right applications, HP Systinet helps you deliver them the right way.

Related services

HP Application Rationalization Services—Begin your application transformation journey with an applications rationalization project. HP Application Rationalization Services inventory applications while assessing cost, quality, risk, total cost of ownership (TCO), and business value defines a future state consistent with your business and IT strategies, and a roadmap of actionable projects to realize that state.

HP PPM Services—HP offers three sets of services based on HP PPM. Strategic Advisory Services include workshop, discovery, and roadmap services to help define business and IT strategies. Solution Consulting Services define a solution architecture, design, and processes, and conduct integrations and implementations. Software Implementation Services accelerate deployment, upgrade, and migration with focused assistance designed to help maximize your investment in your PMO and HP PPM.

HP Transformation and Integration Services—HP provides consulting, custom development, and integration services to bring IT application services up to date with modern architectures and platforms. HP can help transform strategy, architecture, and governance policies to better align with business goals. And HP Integration services can modernize applications to create a streamlined, agile environment that adapts quickly to business needs. Using service-oriented architecture (SOA) and cloud accelerates implementation.

HP ITPS Software and Services for Application Transformation—Modernize

Stakeholders in the application lifecycle, both IT and the line of business alike, must communicate, collaborate, and connect to ensure that every aspect of the software will meet the rigorous demands the business will place upon it and expect of it. It is necessary for each and every organization to embrace ALM. Without ALM, the business risks associated with software become too great to manage. The line of business should demand and expect nothing less than software that will enable the business to thrive and deliver the brand promise of the organization.²

HP Application Lifecycle Management

Attain application agility by mastering the application lifecycle

HP ALM is a unified platform available as software or cloud-based services for managing today's rapidly changing applications from design to delivery. Built on a common foundation and easily extended through a modern and open architecture, HP ALM increases collaboration and reduces cycle time between application teams working in a variety of methodologies from Agile to Waterfall.

HP ALM manages and connects disjointed work processes related to project planning, requirements modeling, definition and management, and development—source and build, test planning and execution, defect tracking, and application readiness for release. HP ALM provides complete traceability and prepares teams for the impact of change driven by application modernization.

HP ALM supports distributed team interaction with social context and mobile device access. HP ALM works with HP Enterprise Collaboration to enable ALM work streams to be collaborated on with context-based conversation, access to history, subject-matter expertise, and intelligent discussions. And, HP ALM supports mobile device interaction with a collection of persona-based mini-applications for phone and tablet.

“The number of application releases, upgrades, and updates continually increases each year, making it a challenge to quickly deliver quality software,” said Sherry Ludlam, Test Capability Team Lead, Fonterra. “By using consistent, repeatable, and standardized processes together with HP ALM 11, we can support the increased volume of change requests that keep our business competitive in the market, while reducing the cost of required resources by a third.”

HP ALM Application Lifecycle Intelligence

Developer freedom with a dash of lifecycle control

HP ALM Application Lifecycle Intelligence (ALI) (available with HP ALM software and cloud-based services) provides application development and delivery teams with the best of both worlds—the ability to enable developers to keep their tools of choice while supporting participation in the managed lifecycle. With HP ALM ALI, teams have real-time visibility into changes made to source code, build system activity, and the resulting impact on requirements, tests, and defects to drive ALM actions or decisions and to support nearly continuous integration.

In addition, HP ALM ALI provides development teams the ability to immediately see application lifecycle tasks and artifacts that drive their work—requirements and user stories, changes, and found defects—from their Integrated Development Environment (IDE) without the overhead of learning a new tool or managing a parallel software environment. HP ALM ALI provides “one click” provisioning of Source Code Management (SCM) and build environments removing the latency caused by configuration of rapidly changing development project infrastructure.

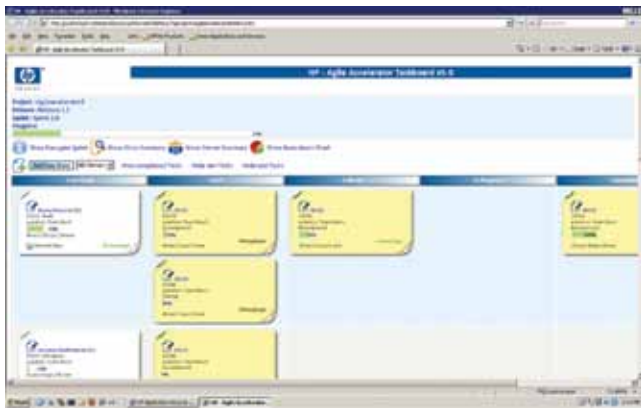
² Source: Solution Snapshot Report: HP Application Lifecycle Management (ALM) 11, By Theresa Lanowitz, Voke Research, February 3, 2011

HP Agile Accelerator for ALM and Quality Center

Bring the Agile view to your ALM and Quality Center managed projects

For project managers and scrum masters, the HP Agile Accelerator lets HP ALM and HP Quality Center (QC) users manage Agile projects without a separate Agile tool. It provides an integrated capability and view for structuring sprints and tracking Agile team progress, incorporating all members of delivery teams. Pre-built user roles, workflows, Agile dashboards, including Kanban and Agile configurations help teams rapidly adopt and manage Agile projects. And because the HP Agile Accelerator sits on top of ALM or HP Quality Center, you are able to support Agile and non-Agile projects with a single solution.

Figure 4. Plan, track, and manage the Agile lifecycle of modern applications with HP ALM software



Lab management

Schedule, provision, and deploy a test lab, tests, and other assets in a hybrid delivery environment

One of the challenges that testing teams often face is the setting up of a lab to run the tests. Many times, they are dependent on other teams to set up the lab. There may be stringent process and time requirements which may not be feasible, especially in an Agile world. Infrastructure may not be ready when the build is ready. And build readiness is often unpredictable. This dependency on others could become a roadblock, especially when they need to run tests on short notice. Also, if the lab is not set up correctly, this can lead to on-going obstacles in testing and ultimately project delays.

HP Lab Management allows testing teams to provision and deploy a test lab by themselves in a hybrid delivery environment (bare-metal or virtual, in-house, or in the Cloud). Leveraging an out-of-the-box integration of HP ALM with HP Continuous Delivery Automation (CDA), the model driven approach helps eliminate user errors in lab configuration, thereby making the testing efforts more relevant and accurate.

Testing teams can also schedule tests along with the lab deployment, so that the execution can be kicked off when a new build is ready to be tested. With this functionality, teams can perform better build verification tests at the end of every build cycle, resulting in improved quality for Agile environments.

HP Lab Management also helps bring development, test, and operations teams closer in a DevOps model, since the same configuration can be used across the application lifecycle, whether in development, test, staging, or production.

Quality management and functional testing

HP Quality Center Enterprise

Empower your testing center of excellence with integrated requirements, test, and defect management

HP Quality Center provides a complete quality management platform connecting your testing activities to requirements and defects, and providing a seamless on-ramp for ALM. It enables quality assurance (QA) organizations to manage application quality with a consistent, repeatable process that helps minimize risk, reduces costs, and increases efficiencies for testing and QA teams across the organization. Available standalone or as a core part of HP ALM software or cloud-based services, HP Quality Center delivers requirements management, release and cycle management, test management, test execution (either through the embedded HP Sprinter manual testing solution or by integrating HP automated testing tools), version management and baselining, and defect management on a single platform, providing QA traceability and visibility across your entire process.

“HP Quality Center software gives us the information we need to support quality across the development cycle. We can now do much more than simply catch defects. We can contribute to reducing the risk of defects in the first place and help streamline both QA and development processes. And we can do it with fewer resources than we needed previously, while supporting more software applications than ever before.” David Moses, QA manager, Delta Air Lines

HP Business Process Testing

Accelerate testing with an extensible framework and re-usable components

HP Business Process Testing connects business analysts (BAs) and QA with the process of defining business use cases and process flows and using them to create re-useable testing components that increase the accuracy of tests and speed execution. HP Business Process Testing enables test engineers to define tests based on the defined business process flows, create, and connect reusable test components using both manual and automated methods and share them with distributed quality teams for on-going testing within HP Quality Center and HP ALM. Now you can take creating tests and testing frameworks to a higher level, improving efficiency and test coverage for today's Agile environments.

HP Unified Functional Testing

Simplify automated functional testing from end-to-end—user interface to back-end services

HP Unified Functional Testing (UFT) accelerates functional testing by simplifying test design and maintenance for both GUI applications and non-GUI (headless) components. It provides functional and regression test automation for every major software application and environment, including advanced Web 2.0 toolkits, native and web-based mobile applications, leading development technologies, headless services, and enterprise resource planning (ERP), and customer relationship management (CRM) applications.

Simplified approaches to test design and maintenance, including keyword and visual drag-and-drop, extend testing to more individuals in your organization, while maintaining flexibility and control for power users. And in addition to independently validating mobile and GUI applications and headless components, HP UFT validates and reports on an integrated test scenario of a process as it traverses through multiple GUI and non-GUI layers of a composite application, improving the overall quality of your modern applications. When integrated into HP ALM and HP Quality Center Enterprise, HP UFT accelerates test execution through scheduled automation for near-continuous integration and Agile delivery.

HP Quality Center Sprinter

A revolution in manual software testing

While automated testing can deliver significant efficiency benefits to testing teams, manual testing is often still required to accomplish testing objectives. Manual testing processes and tools also offer opportunities for increased efficiency through innovations. HP Quality Center Sprinter, available both as stand-alone and a core testing component of HP Quality Center and HP ALM, is a manual testing revolution. HP Sprinter is easy to use and dramatically improves both tester productivity and the accuracy of manual software testing.

Manual test scripts are launched from HP Quality Center and HP ALM into HP Sprinter where the tester carries out the test. Testing actions and results are recorded and defects can also be directly logged within HP Quality Center and HP ALM, clearly communicating and bridging the gap with developers. HP Sprinter handles the automated injection of data into fields under test increasing the speed and accuracy in which a test can be executed. The advanced toolkit included within HP Sprinter allows screen capturing, screen annotation, movie recording, mirror testing, and system information. Simply put, HP Sprinter has changed the game.

Figure 5. HP Sprinter—a new era in manual testing



Requirements definition and management

HP Requirements Management

Business and application team alignment every step of the way

HP Requirements Management is a core module of HP ALM and HP Quality Center that supports BAs and distributed project teams with defining and managing requirements while maintaining multi-dimensional traceability among requirements, source code (when HP ALM ALI is used), tests, and defects across releases and cycles—all within a single, centralized repository. Requirements can be created in HP Requirements Management, or imported from multiple sources, analyzed based on business process models, created into templates, and standardized and linked to ALM artifacts for coverage, change impact, and defect correlation, all designed to focus where it matters and deliver high-quality applications faster.

Figure 6. Social collaboration with HP ALM Requirements Management—for high velocity delivery of business value



Performance engineering and validation

HP Performance Center suite delivers integrated performance testing solutions that can emulate hundreds or thousands of concurrent users on a variety of devices, to apply production workloads to virtually any environment; identify potential performance bottlenecks; and diagnose and fix the root cause of the problems. Using the HP solutions, testing teams can stress an application from end to end—applying measurable and repeatable loads—and then use the data to identify scalability issues that could impact users.

The performance testing solution from HP includes the following offerings: HP Performance Center, HP LoadRunner, and HP Diagnostics and is available as licensed software, as SaaS, or in the Cloud. With these solutions, HP provides customers a wide variety of options for performance testing, starting from a simple small load testing project to a testing Center of Excellence (CoE) that support multiple projects and multiple people across the enterprise.

HP LoadRunner Software

The industry's most innovative and widely adopted software for automated load testing

HP LoadRunner is a comprehensive solution for testing system behavior and performance. It enables a consistent, repeatable process for performance testing, enabling application quality and reliability. HP LoadRunner is used more than any other load testing solution in the world today, according to independent analysts.³

Using a record and playback mechanism, it helps you drive production workload to your test environments removing the main barrier to performance testing across your applications. As it drives load against the system, HP LoadRunner captures the end-user response time of key business processes and transactions to determine whether SLAs can be met and business results delivered. Non-intrusive, real-time performance monitors obtain and display performance data from every application tier, server, and system component. This data is correlated with the transaction data to quickly pinpoint problem areas.

With the patented TruClient technology, HP LoadRunner enables faster and easier scripting, and gives you the ability to record and replay at many architectural levels, from the GUI level down to the transport and socket level, depending on the skill set available and the level of customization required. It supports the industry's broadest range applications and protocols, including new mobile and Web 2.0 technologies as well as legacy application technologies.

³ Source: IDC Application Software Quality Market share Report, December 2010

Figure 7. HP LoadRunner—breakthrough productivity for automated load testing



HP Performance Center

The premier solution for enterprise performance testing

HP Performance Center is a comprehensive enterprise performance testing solution, geared toward COEs. Built on HP LoadRunner, it inherits all the capabilities of LoadRunner. It was designed to be a shared, collaborative performance testing suite, enabling performance engineering teams to leverage and optimize shared resources. Through HP Performance Center's scheduling engine, teams can plan future tests and schedule the resources they may need as they need them. HP Performance Center also provides the ability to consistently input performance requirements and connect those to the performance tests and defects that relate to them. This linkage provides end-to-end traceability between defects, tests, and requirements throughout the lifecycle.

HP Performance Center provides capabilities to bridge the gap between performance testing and performance monitoring, in the form of our performance lifecycle capabilities. Through these capabilities, performance testing scripts can be shared for synthetic monitoring in production and vice-versa. In addition, we can get real user data from either HP Business Service Management (BSM) solutions, or from other products such as WebTrends, so that testers can make more informed decisions regarding what to test and what scenarios to build.

To further enable collaboration between performance testing, development, and operations (DevOps), HP Lab Management capabilities are available as part of HP Performance Center as well.

HP Performance Center can be implemented as a separate product, or as a solution that is fully integrated with HP ALM so that performance validation can become a core part of the entire lifecycle management process. Through this integration with HP ALM, organizations can see the overall quality of the project or application across the entire lifecycle—including functional, performance, and security.

HP Diagnostics

Root-cause analysis of application layer issues

HP Diagnostics helps drill down into the application layer to pinpoint the root cause of application level bottlenecks. It works on application stacks such as J2EE, .Net, SAP, Oracle, and SOA. It integrates seamlessly with HP LoadRunner and HP Performance Center, so that users can drill down into problem areas from within the performance testing solutions and easily retrieve the Diagnostics data.



HP Service Virtualization

Simulate constrained services for faster development and testing of cloud and composite applications

Empower project teams to develop and test in constrained environments and reduce cycle time with HP Service Virtualization software. The simulation of the actual service component's behavior enables testers to begin performing functional and performance testing even when the real services are not available or when they are not suitable for the particular test. Simulation models may be rapidly created from service interface specifications, recorded from real or logged communication among components, loaded from static data sources, spreadsheets, and databases or reused from previously finished testing projects. HP Service Virtualization integrates easily with both HP UFT and HP Performance Testing solutions (Performance Center and LoadRunner).

Related services

HP Agile Services: HP Agile Services help you build automation solutions for agile development as part of the application testing lifecycle management function—such as quality, performance, and security testing—using Agile methodologies. The main tool of the Agile Services offering is the HP Agile Accelerator, which delivers project planning for Agile testing, quality management, dashboard reporting, development management, and continuous integration—all automated with HP ALM and HP Quality Center.

HP Testing as a Service: HP Testing as a Service (TaaS) gives you output-based, per-unit application testing for quality, performance, and security. Our as-a-service software testing service delivery model gives you lower application testing costs, agility to manage change and respond to business demand as well as reduced risk of downtime that can negatively impact your business.

The HP Private Cloud for Test: Is a comprehensive solution for implementing onsite private cloud capability to support the complete testing lifecycle. Made up of software, consulting, and best practices, it addresses common problems like slow time-to-market, costly test environments, and the business risk of defects deployed in operations. It is the foundation and guidance for building a dynamic, scalable test environment. Integrated and automated from development through to operations.

HP Center of Excellence Services: HP Center of Excellence Services focus on people, process, and automation technology. We help you develop an internal performance, application security, or quality testing competency center focused on validating the performance of applications to meet business requirements. HP Center of Excellence Services give you a management and automation platform for performance optimization processes, consulting services, support services, leadership, and advocacy.

HP ALM Consulting: HP ALM Professional Services provide testing expertise; innovative service delivery models; and design, implementation, and education services for industry-leading HP ALM software. HP ALM QuickStart packages provide HP best practices and knowledge transfer to implement HP ALM software in as quickly as two weeks.

HP Test Data Management Services: Access to test data can be one of the major inhibitors to timely and comprehensive application quality management and testing. HP Test Data Management services support teams improving testing processes by creating de-identified, relevant sub-sets of data in an automated and repeatable infrastructure. HP Test Data Management Services work with HP ALM, HP Quality Center, and HP Performance Center, reducing time to extract and access test data for manual and automated testing.



Application security testing

HP Fortify Software Security Center

Manage and extend application security across the application lifecycle

HP Fortify Software Security Center is a suite of tightly integrated solutions for fixing and preventing security vulnerabilities in applications. It mitigates software security risk by helping ensure that all applications—whether built for the desktop, mobile or cloud—are trustworthy and in compliance with internal and external security mandates. HP Fortify Software Security Center helps secure all software in the enterprise, regardless of whether it is developed in-house, procured from third-party vendors, or running in production.

HP Fortify Software Security Center is available on-premise or on-demand, and with managed services and supports both Application Security testing—identifying vulnerabilities throughout the application lifecycle with static, dynamic, or integrated application testing, and secure development—automating the management, tracking, remediation, and governance of enterprise software risk.

“Maintaining a centralized portfolio of HP technology management tools allows McKesson to support our applications development groups more cost-effectively. And we know the software we release meets our customer’s expectations, from quality and performance through security.” Todd Eaton, director for Applications Lifecycle Management Tools and Services, McKesson Corporation

Related services

Comprehensive Application Threat Analysis: HP can help you build security into your applications from the start—when it’s least expensive to do so. Using this service during the requirements, architecture, or design phase helps you avoid costly recoding, or redesigns that may be needed when vulnerabilities show up in later stages. This unique methodology has been proven internally and externally over several years, allowing us to find, fix, or avoid introducing many security defects before code release.

Web Application Scanning and Penetration Testing: During the development phase, we can scan your source code to identify problems and recommend ways to fix issues. During the test and production phases, we employ our own security experts as well as automated tools to scan your applications or third-party applications for vulnerabilities. You can augment our scanning service with Penetration Testing (also known as ethical hacking), where we have an HP expert (with your permission) try to break into your applications.

SOA Security Services: Many businesses are using SOA to cut costs and increase the flexibility of application development by reusing SOA applications. SOA requires special attention to its unique security requirements. HP Services can do the SOA application development for you, or train you on the security principles of SOA development.

Application Security CoE Service: We can help you set up a CoE around application security that cuts across functional lines to bring together development, QA, and security leadership personnel. Together we work with you to brainstorm challenges, develop an architecture blueprint and rollout plan, provide application security mentoring and training, and drive piloting and implementation of appropriate tools.

Perform better with ITPS

HP ITPS Executive Scorecard

VP of Applications Edition

HP software is not just about IT management. It's about helping IT perform better, by giving IT leaders the visibility and control to build and operate a seamless, secure IT landscape. Today's IT application executives need a simple way to drive a performance-driven culture within their organization and demonstrate IT's value to the rest of the business. The VP of Applications edition puts executives in the know by providing 60+ KPIs to evaluate the organization's total efficiency, strengths, and risk through a real-time dashboard.

“HP IT Performance Suite automates the collection, visualization and management of performance metrics from across disparate applications, operations, security and information investments. With IEEE's planned implementation of the HP Suite, I expect to have, for the first time, one complete view of IT's performance using the indicators that matter most to our business.” Alexander Pasik, CIO of IEEE⁴

⁴Source: ITPS launch, June 2011

Figure 8. Perform better with the HP ITPS Executive Scorecard for the VP of Applications



Bring it all together—Application agility is within reach

There is no hiding from the increasing demand to modernize and re-architect applications to support rapidly changing business processes, consumerization, mobile devices, and the cloud as a delivery platform. Enterprises are driven to make the transition as quickly as possible, since technology platforms are rapidly evolving and customers and stakeholders are adopting and demanding these innovations. Competitiveness, customer satisfaction, and ultimately revenue depends on making this transition.

Meanwhile, budgets can be flat and the pace of change stretches them even thinner. You simply won't have enough resources to effectively address modernization using legacy tools and processes. Now is not the time to slowly plan a massive transformation. Get ahead of this technology transition now and tool up with solutions that guides and accelerates your path to transformation. Software and services that enables portfolio visibility, rapid decision making, automation of repetitive tasks, development and testing collaboration, reduced cycle times, and ultimately faster delivery are key to keeping up with the pace of demand and change.

HP ITPS Software and Services for Application Transformation is designed exactly for the challenge of application agility.

HP Services

Get the most from your software investment

HP provides high-quality software services that address all aspects of your software application lifecycle needs. With HP, you have access to standards-based, modular, multi-platform software coupled with global services and support. The wide range of HP service offerings—from online self-solve support to proactive mission-critical services—enables you to choose the services that best match your business needs. For an overview of HP software services, visit managementsoftware.hp.com/service.

Global citizenship at HP

At HP, global citizenship is our commitment to hold ourselves to high standards of integrity, contribution, and accountability in balancing our business goals with our impact on society and the planet.

To learn more, visit hp.com/hpinfo/globalcitizenship, and for information about the HP Eco Solutions program, go to hp.com/ecosolutions.

Learn more

To attain application agility with HP ITPS Application Transformation software and solutions, visit, hp.com/go/software.

Connect with peers and HP Software experts:
hp.com/go/swcommunity.

Get connected

hp.com/go/getconnected

Get the insider view on tech trends, support alerts, and HP solutions

© Copyright 2010, 2012 Hewlett-Packard Development Company, L.P. The information contained herein is subject to change without notice. The only warranties for HP products and services are set forth in the express warranty statements accompanying such products and services. Nothing herein should be construed as constituting an additional warranty. HP shall not be liable for technical or editorial errors or omissions contained herein.

Oracle is a registered trademarks of Oracle and/or its affiliates.

4AA3-0673ENW, Created September 2010; Updated May 2012, Rev. 1

